

## Upcoming 2014 NHIA Events

NHIA Community Center, 4012 Whitfield Rd, CH

**Sat, April 12 – New Hope Volunteer Fire Department  
& NHIA Country Breakfast** from 7am to 11am

**Mon, April 28 – Deer-Resistant Gardening** at 7pm  
Led by Joann Currier of The Unique Plant. Event at the nursery located at 4207 Oak Hill Road, off Sunrise Road

**Tue, May 6 – NC Primary Elections** (Patterson  
Precinct) from 6:30am to 7:30pm

**Tue, May 20 – Natural Gas East of Sunrise?** at 7pm  
Led by a representative from PSNC

**Sun, July 20 – Front Porch Ice Cream Social** from  
2pm to 5pm including music & a tribute to the late Sue Whitfield

**October (tbd) – Candidates' Forum**

**November 8 – New Hope Turkey Run**

**November (tbd) – Member Meeting & Board Elections**



2014  
April

## New Hope Improvement Association

*Contents >>>*

- **Welcome to the NHIA**
- **The Community Room**  
Available to rent for your next group occasion
- **Join the New Hope Improvement Association**
- **Volunteer Opportunities**
- **2014 Community Events**  
**Robson Mill Hike**  
**Upcoming Events**

**For more information, visit  
our website at:**  
[www.newhopeimprovement.com](http://www.newhopeimprovement.com)



## Welcome to the NHIA Hello Neighbor!!!

*Letter from the Board of Directors*

*You are receiving this newsletter because you live within the New Hope Creek watershed.*

The New Hope Improvement Association (NHIA) was established more than 40 years ago. The NHIA's original goals were to protect New Hope Creek and to establish a volunteer fire department and rescue squad. Since its inception in 1973, the [New Hope Volunteer Fire Department](#) has grown into an impressive force that contributes immeasurably to the safety and wellbeing of our community. Protection of the creek is an ongoing mission, and an important component of what we do.

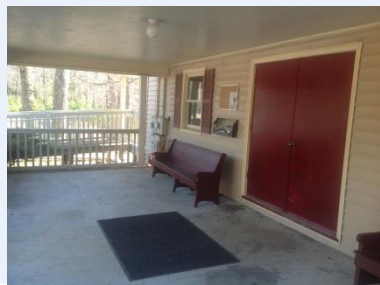
Today's mission is to promote the common good of residents and property owners of the New Hope Creek watershed. This includes promoting a sense of community, civic responsibility, public safety, & environmental stewardship of the New Hope Creek area.

We manage the [Community Center on Whitfield Road](#) in Chapel Hill and organize the annual Turkey Run through Duke Forest in the Fall. We've held local candidate forums, community meals, and social events over the years and gladly welcome new members and volunteers. Residency is not required. See membership information on page 2.





## Room for Rent for all your occasions



The NHIA manages the Community Center located adjacent to the fire station at 4012 Whitfield Rd in Chapel Hill, NC. To inquire about renting the center, contact us at [rent@newhopeimprovement.com](mailto:rent@newhopeimprovement.com).

### Parking

There is plenty of parking for your guests. There are handicap parking spaces

### Meeting Room

The handicap accessible heated / air-conditioned room is 35x40 square feet. There is also front porch and large kitchen.

The room can be used for meetings or dining events. Included in the rental are nine 8' tables and seven 6' tables with more than 75 chairs

### Kitchen Area

The kitchen is complete with a refrigerator, 3 stoves, 2 sinks and a 25 foot serving station for hot & cold dishes. Assorted pots, coffee urns and cooking utensils are available for use.



## Join the New Hope Improvement Association (NHIA)

Membership dues are ONLY **\$5 per household** per year

Name \_\_\_\_\_

Address \_\_\_\_\_

City \_\_\_\_\_ State \_\_\_\_\_ Zip code \_\_\_\_\_

Telephone \_\_\_\_\_ E-mail \_\_\_\_\_

Mail completed membership form and check to: **New Hope Improvement Association, P.O. Box 16013, Chapel Hill, NC 27516-6013**

### Sign-up to **VOLUNTEER** to help with NHIA activities!!!

\_\_\_\_ Turkey Run \_\_\_\_ Breakfast \_\_\_\_ Hospitality/social \_\_\_\_ Communications

\_\_\_\_ Programs \_\_\_\_ Building/grounds maintenance \_\_\_\_ Membership list/recruitment

\_\_\_\_ Website maintenance \_\_\_\_ Other (specify) \_\_\_\_\_

## Robson Mill Hike

The first event of the 2014 NHIA schedule was a hike to the remains of the 18<sup>th</sup> century Robson Mill on New Hope Creek which was constructed at about the same time as the University of North Carolina at Chapel Hill (1790s).



### Robson Mill

Robson Mill was built around 1800 on New Hope Creek and its foundation and remnants of the dam are still visible near Wooden Bridge Road in the Korstian Division of Duke Forest.



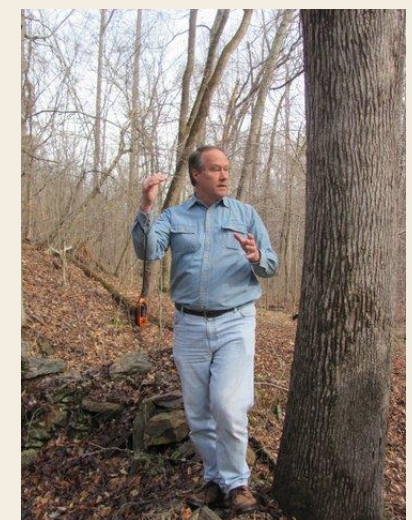
There were a dozen hikers including leader Stewart Dunaway who has researched and written a book on the Robson Mill. The group also included a descendent of the Robson family who still lives in this area and had heard about the hike!

Stewart related historical facts and speculations about the layout and daily functions of the mill/farm complex. We had a great time and Feb. 22 was one of only a few warm sunny days all winter long!

There are several other interesting routes and sites along our part of New Hope Creek and more hikes will be planned.

Thank you Stewart and everyone who participated!

For additional Robson Mill information, check on-line for Stewart Dunaway's book, *Johnston and Robson Mill History - Orange County, NC*



### Q: *What's Happening in April?*

A: **Sat, April 12 – Country Breakfast from 7am to 11am**

Sponsored by New Hope Volunteer Fire Department & NHIA

**Mon, April 28 – Deer Resistant Gardening and Other Tips from The Unique Plant at 7pm**

Presented by Joann Currier. This NHIA-sponsored program will be held at The Unique Plant nursery at 4207 Oak Hill Rd, off Sunrise Rd.

